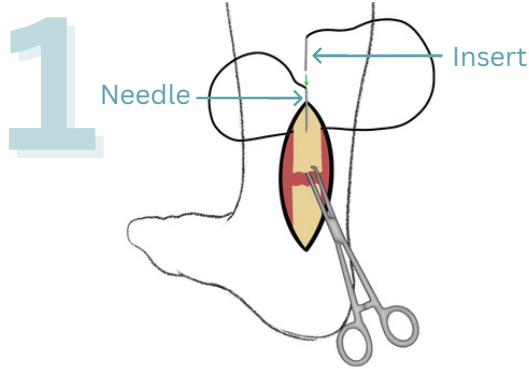
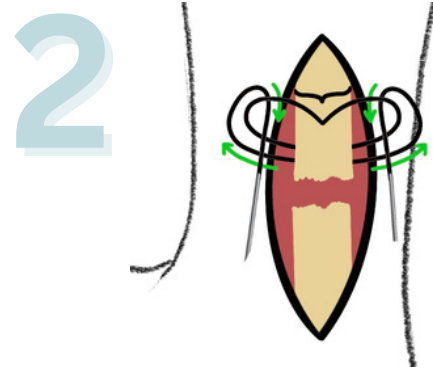




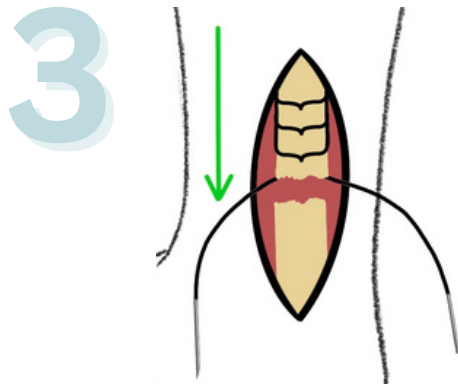
EasyGuide™: Achilles Tendon Repair



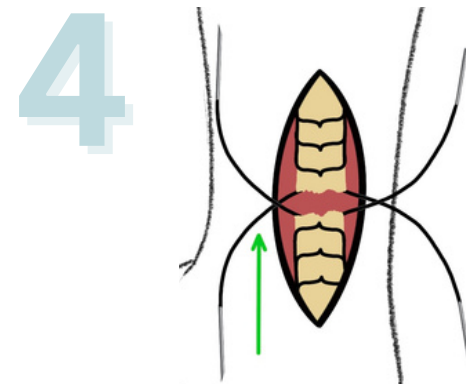
Grasp the proximal stump of the Achilles with an Allis clamp and pass the suture around the tendon. Connect EasyWhip® by sliding the Insert into the back end of the Needle.



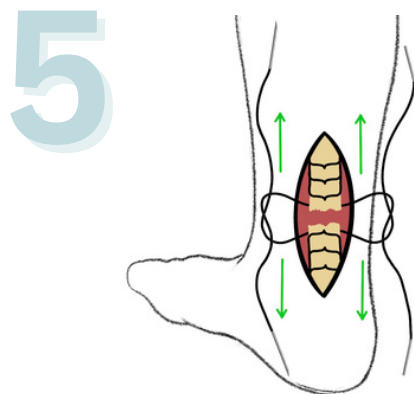
Create a **WhipLock™** stitch by passing EasyWhip® through the tendon. Before tensioning the suture loops, separate the Insert from the Needle. Pass the Insert and Needle through the loops in the direction of stitching, then tension the sutures.



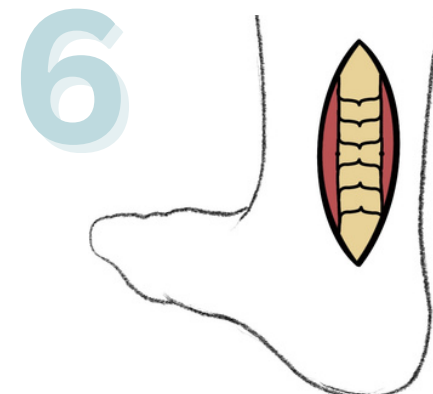
Repeat the previous step moving toward the end of the stump to continue creating WhipLock™ stitches.



Repeat steps 1-3 on the distal stump of the Achilles.



Once the desired number of WhipLock™ stitches are placed, tie the opposing suture tails to approximate and secure the Achilles repair.



If desired, connect EasyWhip® and pass through the tendon to bury the knots. Cut suture tails and discard the Insert and Needle.



www.winter-innovations.com
info@winter-innovations.com

©2024 Winter Innovations.
All rights reserved.
MKT505A 2024-3

This surgical technique is provided to aid clinicians using EasyWhip® for standard of care procedures. EasyWhip® is indicated for use in approximation and/or ligation of soft tissues, including the use of allograft tissue for orthopedic surgeries. EasyWhip® simplifies and standardizes the same suture ties that can be performed manually. Reference: Nunley, J. A. The Achilles Tendon: Treatment and Rehabilitation. (Springer New York, 2008).

Content is intended for educational purposes only. Surgeons should rely on their professional expertise, review product guidelines, and be trained on products before use in surgery. Refer to the Instructions For Use for full prescribing information www.winter-innovations.com/eifu. EasyWhip® is protected under granted and pending US and international patents. More at www.winter-innovations.com/patents